

AGES 8+

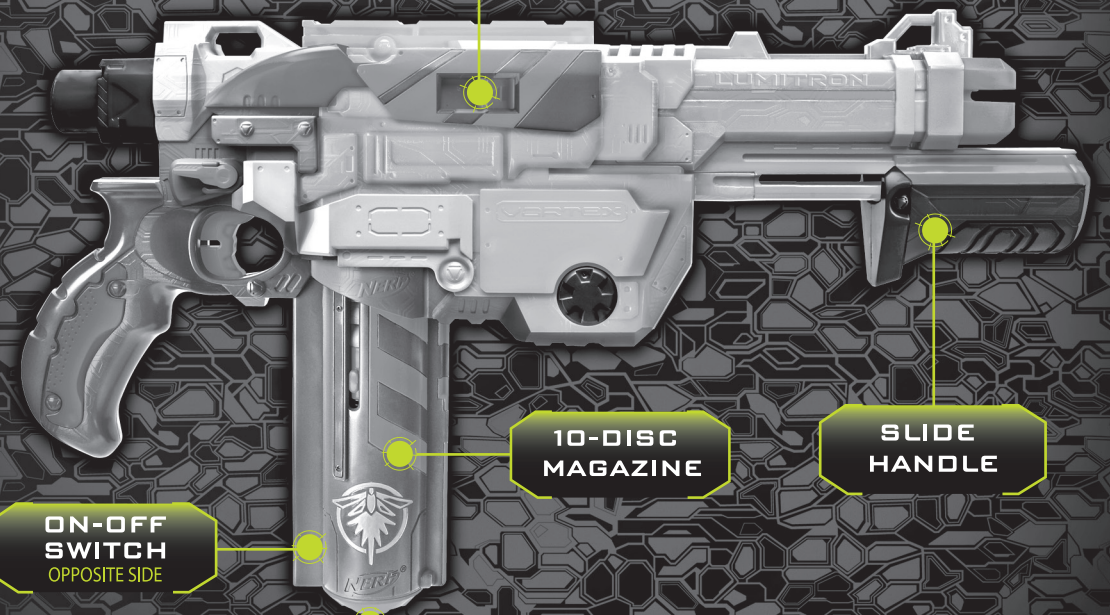
## IMPORTANT: BATTERY INFORMATION

### ⚠ CAUTION:

1. Always follow the instructions carefully. Use only batteries specified and be sure to insert them correctly by matching the + and - polarity markings.
2. Do not mix old batteries and new batteries or standard (carbon-zinc) with alkaline batteries.
3. Remove exhausted or dead batteries from the product.
4. Remove batteries if product is not to be played with for a long time.
5. Do not short-circuit the supply terminals.
6. Should this product cause, or be affected by, local electrical interference, move it away from other electrical equipment. Reset (switching off and back on again or removing and re-inserting batteries) if necessary.
7. **RECHARGEABLE BATTERIES:** Do not mix these with any other types of batteries. Always remove from the product before recharging. Recharge batteries under adult supervision. **DO NOT RECHARGE OTHER TYPES OF BATTERIES.**



⚠ **CAUTION:**  
Do not aim at eyes or face.  
**TO AVOID INJURY:** Use only discs designed for this product. Do not modify discs or disc blaster.



DISC EJECT SWITCH

10-DISC MAGAZINE

SLIDE HANDLE

ON-OFF SWITCH  
OPPOSITE SIDE

BATTERY DOOR

**x4 ALKALINE BATTERIES REQUIRED**  
1.5V AA or LR6 size  
**NOT INCLUDED**

Phillips/cross head screwdriver (not included) needed to insert batteries.

Be sure to read and follow all instructions carefully before using this product.

### Hey NERF Nation!

Join us online and keep up with the latest and greatest news from NERF!



Ask a parent before going online.

Questions? Call 1-800-327-8264

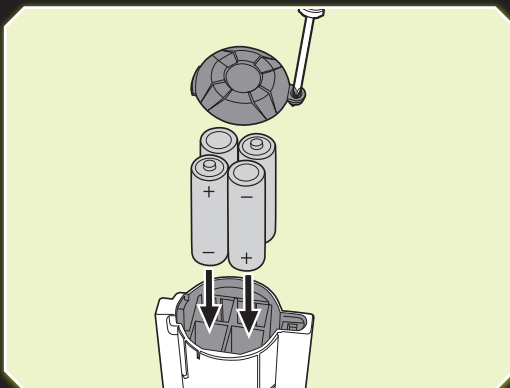
Product and colors may vary.

34382  
PN 7225330000



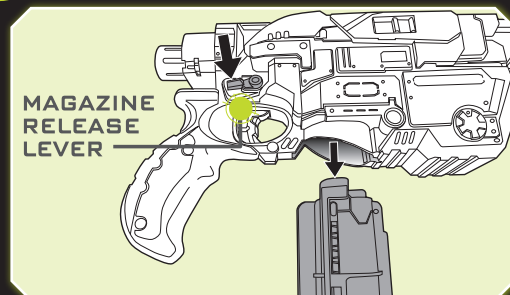
YouTube and the YouTube logo are trademarks of Google Inc. ®\* and/or TM\* & © 2011 Hasbro. All Rights Reserved. TM & © denote U.S. Trademarks. Patents Pending.

## TO INSERT BATTERIES IN CLIP

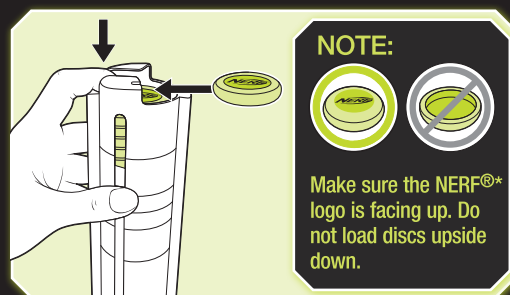


1. Loosen screw in battery compartment door with a Phillips/cross head screwdriver (not included).
2. Remove battery door. Insert 4 x 1.5V "AA" or LR6 alkaline batteries.
3. Replace battery door and tighten screw.

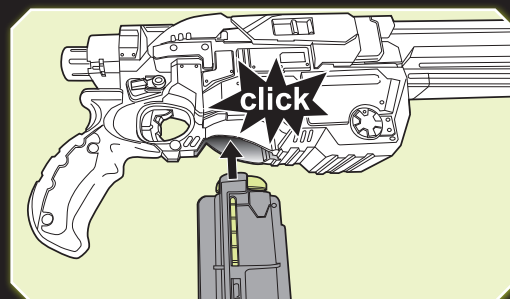
## LOADING AND FIRING



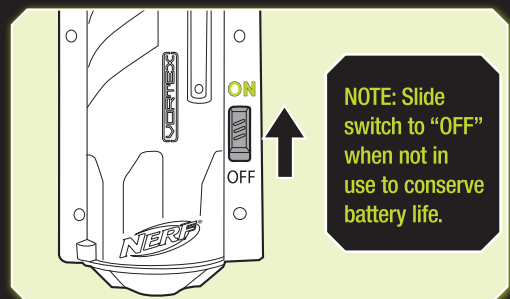
- 1 Push down the MAGAZINE RELEASE LEVER and pull out the 10-DISC MAGAZINE.



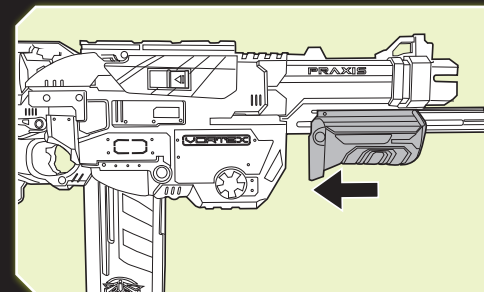
- 2 One at a time, load up to 10 discs into the 10-DISC MAGAZINE. Do not load discs upside down. Do not load more than 10 discs.



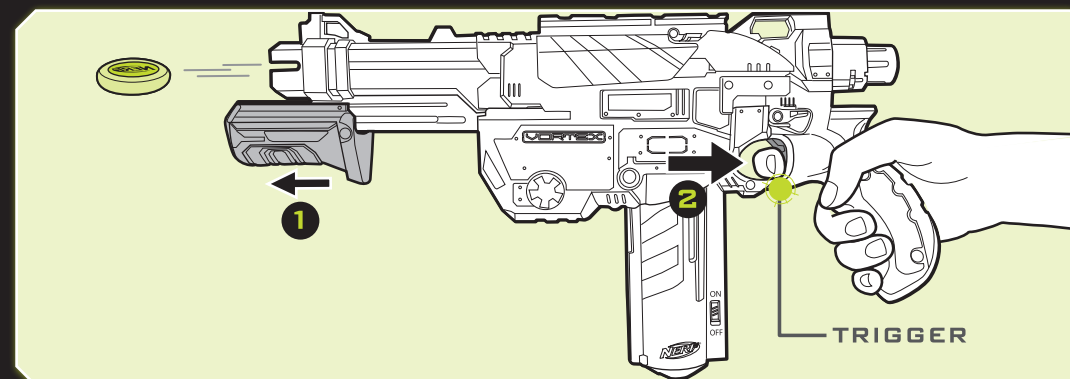
- 3 The 10-DISC MAGAZINE should slide easily into place. It only fits in one direction. Do not force it.



- 4 Slide switch to "ON" position to charge glow discs.



- 5 Pull SLIDE HANDLE all the way back, then slide it all the way forward to cock.

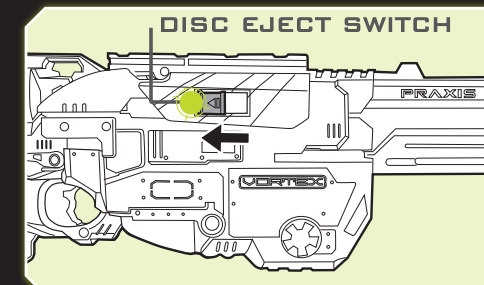


- 6 Pull trigger to fire.

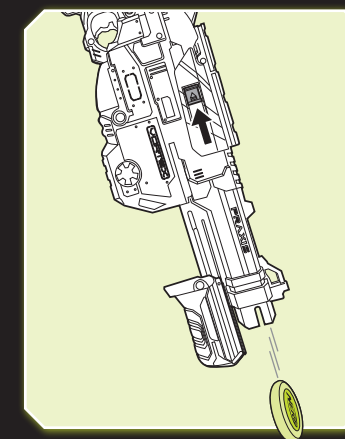
NOTE: Single fire only. You must release the trigger before pulling the SLIDE HANDLE back to avoid jams.

## CLEARING A JAM

If the blaster is loaded but will not fire, it may be jammed.



- 1 Remove the 10-DISC MAGAZINE following the loading instructions.
- 2 Press and hold the DISC EJECT SWITCH.



- 3 Point the blaster at the ground. The jammed disc will fall out.